

SUNSEEKER PORTOFINO 48

The world's finest luxury motoryachts

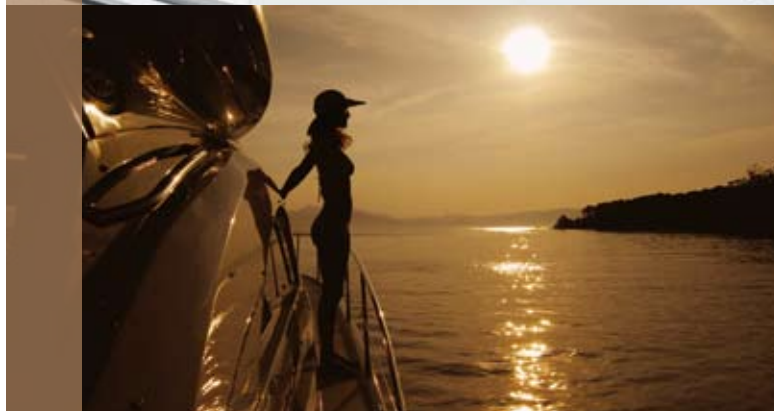
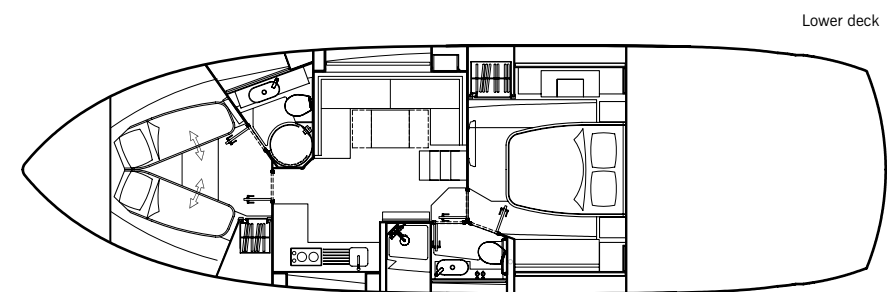
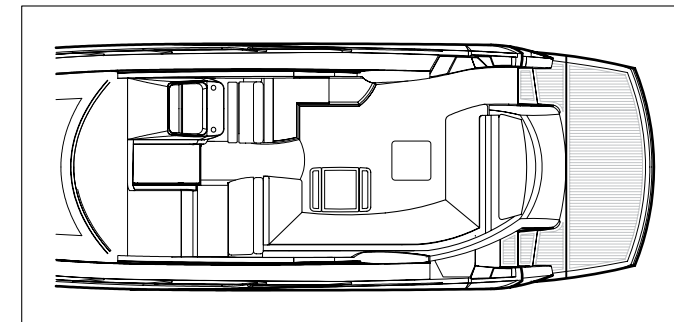
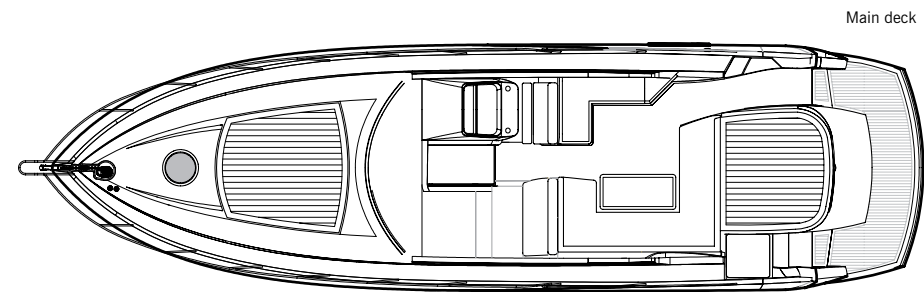
PORTOFINO 48

STYLE: SPORTS CRUISER

ACCOMMODATION: UP TO 4 GUESTS

PERFORMANCE: UP TO 34 KNOTS

REPLACING THE PORTOFINO 47, THIS NEWCOMER ACHIEVES A REMARKABLE LARGER INTERIOR. WHERE ONCE THERE WAS THE CLASSIC MAIN SUITE IN THE BOW AND A CROSS-BEAM, CENTRAL TWIN CABIN, THE PORTOFINO 48 HAS SWITCHED THIS WITH A REMARKABLE, MIDSHIPS FULL-BEAM OWNER'S SUITE, WITH HUGE IN-HULL WINDOWS, WHILE FORWARD THERE'S A CLEVER NEW VIP SUITE, WITH THE CENTRAL DOUBLE BED SWINGING APART TO CREATE V SINGLE BERTHS FOR FAMILY OR JUST-FRIENDS COMBINATION. HOW DOES IT ACHIEVE SO MUCH EXTRA SPACE? SUNSEEKER HAS INNOVATED A NEW TAKE ON HULL DESIGN OPTIMISING ACCOMMODATION WITHOUT UNDULY AFFECTING PERFORMANCE, DERIVED HERE FROM POD DRIVES, WITH WHICH YOU CAN POINT AND PARK BY JOYSTICK CONTROL.



PRINCIPAL CHARACTERISTICS

Classification	CE (Cat B)	
Length overall – (incl. fixed platform and pulpit)	15.66m	51'4"
Length hull – (incl. fixed platform)	14.96m	49'2"
Length overall – (incl. lifting platform and pulpit)	16.09m	52'7"
Length hull – (incl. lifting platform)	15.43m	50'6"
Length waterline – (@ half load)	11.20m	36'8"
Beam – (maximum)	4.30m	14'1"
Draft – (maximum @ full load)	0.85m	2'8"
Height – (above waterline excl. navigation mast)	4.34m	14'2"
Displacement – (@ full load)	16566kg	36521lb

Fuel capacity	1320 litres	290 GB gal.	349 US gal.
Fresh-water capacity	328 litres	72 GB gal.	87 US gal.
Propulsion	Pod drive		
Engine options	up to 870 PS (total)		
Fuel options	Diesel		
Generators	Standard 4.5kW @ 50Hz (Euro) 9kW @ 60Hz (US)		
Maximum speed	up to 34 knots*		
Cruising speed	28 knots*		

All principal characteristics and specifications are provisional and subject to final specification.



PORTOFINO 48

PRINCIPAL FEATURES

Electric anchor winch with deck and cockpit controls
Hot and cold swimming shower
Full wetbar with hot and cold water
Coolbox
Large cockpit table
Depth sounder
VHF radio
Flatscreen television in all cabins
DVD player in saloon
Radio/iPod
Electric refrigerator
Electric hob and microwave
Hot and cold water system
Automatic fire extinguishers
Automatic bilge pump
Radar
Autopilot
Generator
Teak bathing platform and step
AC shorepower/battery charger
Vacuum toilets and holding tank

All items included in standard specification.

US specification includes:

Air conditioning
Upgraded generator
US Coast Guard build regulations
US specification appliances

STANDARD SPECIFICATIONS

1 Construction

Hand-laid GRP
Gel coat including stripes
Vinylester skin coat with powderbound mat
Stitched multi-axial reinforced single skin bottom
Balsa cored hull topsides
PVC foam cored deck and superstructure
Hull stiffened with longitudinal stringers supported by transverse bulkheads and floors

2 Deck

Moulded non-slip deck finish
Fittings all in stainless steel
Pulpit and cockpit rails
Stainless steel fendering with rubber insert
10 stainless steel cleats
Electric anchor winch and capstan with deck and cockpit controls
Stainless steel bow roller with anchor stop
Delta anchor and 30m chain (galvanised)
Chain locker with fender storage
IMCO navigation lights
Fuel filler
Fresh water filler
Foldaway swimming ladder
Teak-laid bathing platform and steps
Hot and cold swimming shower
Ensign staff and socket
Fender tie bar under anchor locker lid

3 Cockpit

Self draining
Safety door
Full wetbar with hot and cold water and coolbox
Dinette seating
Fold-out table
Folding helm seat
Co-pilot seating area
Chart table
Large stern sunbather over garage space
Glass holders
Overhead cockpit lights 12v
Low-level cockpit lights
Waterproof carpet

4 Helm console

Console with burr type walnut fascia
Radar
Autopilot
VHF radio
Leather and chrome steering wheel
Single lever controls
Full analogue engine instrumentation
Electronic speedlog
Depth sounder
Fuel gauge
Fresh water gauge
Compass
Horn
Trim tab controls
Waterproof plug and socket
2 windscreen wipers and washers
Fire extinguisher
Glass holders



5 Main cabin/saloon

Large folding dinette
Flatscreen television
DVD player
Radio/iPod with speakers for the cockpit
Stowage beneath seats
Drinks cupboard
Overhead halogen lights 12v
Opening portholes with mosquito screens and curtains
Deck hatch
Main switch and circuit breaker panel (AC/DC)
Double AC socket
Choice of lacquered interior finishes and veneers
Scatter cushions
Fitted carpet

6 Galley

Electric refrigerator
Electric twin hob
Microwave
Hot and cold water
6 place crockery set
6 place cutlery set
Cupboard storage and drawers
Opening porthole with mosquito screen and blind
Double AC socket
Hand-held fire extinguisher
First aid kit
Rubbish bin

7 Master aft stateroom

Double bed
Storage lockers
2 x reading lights 12v
Hanging wardrobe
Overhead halogen lighting
Large side windows and curtains
Settee
Door to toilet/shower
Double AC socket
Flatscreen television
Fitted carpet

8 Master en suite toilet and bathroom

Wash basin
Taps and accessories
Hot and cold water
Mirrored vanity unit
Toothbrush glass holder
Soap dish
Towel ring
Stowage cupboard
Vacuum toilet
Shower compartment
Overhead lights
Opening porthole with mosquito screen and curtain
Razor socket 240/110v

9 Twin forward cabin

Two single V berths to swing and make double
Under-berth storage
Hanging wardrobe
Storage cupboard
Deck hatch
Overhead halogen lighting
2 x reading lights
Opening porthole with mosquito screen
Double AC socket
Flatscreen television
Fitted carpet

10 En suite toilet compartment

Wash basin
Taps and accessories
Hot and cold water
Mirrored vanity unit
Toothbrush glass holder
Soap dish
Towel ring
Shower
Overhead lights
Vacuum toilet
Opening porthole with mosquito screen and curtain
Razor socket 240/110v

11 Engine compartment and ancillaries

Soundproofing throughout
Fuel filters/water separator to engines and generators
FM200 manual/auto fire exit system
Automatic bilge & flood pumps with high level alarms
Air extraction fans – 24v
Generator exhaust silencers and water separators
Engine exhaust dry risers and water injection
Strainers to all raw water materials

12 Electrical system

Slow speed generator with underwater silent exhaust system
AC dockside connection
Galvanic isolator
24v DC electrical system with full circuit breaker protection
4 x engine batteries
4 x domestic batteries
2 x generator batteries
Alternator split charging system
Battery switches controlled from locker in cockpit
Battery charger
Water heater
AC sockets throughout the boat

13 Underwater gear

Volvo Penta IPS drive system
Valves to all underwater skin fittings
Sea water strainers to engines and generators
Full cathodic bonding system to zinc anodes
Stainless steel trim tabs.

14 Systems

Electric toilet system – 24v
Aluminium freshwater tank
GRP fuel tank
Fresh water pressure system – 24v
Calorifier – 240v
Grey water stump box & discharge pump – 24v
Bilge pump system
FM200 manual/auto fire exit system
Auxiliary hydraulics
Hydraulic power steering

15 Miscellaneous

2 sets towels
2 x mooring warps
6 x fenders

16 Optional extras

Opening hard top
Air conditioning
Upgraded generator
Teak cockpit
Bow thruster
Hydraulic lifting platform – maximum capacity for platform and garage combined 350kg

US specification includes:

Air-conditioning
Upgraded generator
US Coast Guard build regulations
US specification appliances



*Every attempt has been made to give accurate information, but performance and range figures are estimates given as a guide only. Dirt or growth on the hull, tuning of the engines, size, make of engines fitted, damage to propellers, the temperature of the air and water, the weight of fuel, water, stores, number of people, propeller pitch, quality of fuel and other matters, can all affect a boat's performance and range. For these and other reasons we can give no performance, range or other guarantees, and neither such guarantees nor anything contained herein constitutes an offer of contract or any representation or agreement, or may otherwise be relied upon. The photographs and artist's impressions in this brochure are of existing models in the Sunseeker range. There may be items shown in these photographs and artist's impressions that are not included in the standard inventory of the models shown. Specifications contained on the web site are samples only and should not be relied upon and may refer to models only intended for sale in a particular territory and not generally. No guarantee is given that any model will be available in any territory; however by contacting us we can advise you of models that are likely to be available in each territory.

Actual specifications will be provided when a sales order or enquiry is placed with us or our approved Sunseeker dealer. Specifications for models sold in different markets may vary and specifications and models may be changed or withdrawn at any time without prior notice. The individual specification for each vessel will be agreed as part of the sale contract between the purchaser and the Sunseeker dealer. Dealers and distributors are independently owned and operated entities, and therefore Sunseeker dealers and distributors are not owned by Sunseeker International Limited or any subsidiaries or other related entity of this company nor are they their agents. Therefore they have absolutely no authority to commit Sunseeker International Limited, or any subsidiary or other related entities of Sunseeker International Limited to any pledge, contract or agreement in any form or by any means unless first accepted in writing by Sunseeker International Limited. In some examples herein Sunseeker have referred to measurements, specifications or other details applicable to a particular territory and no guarantee is given that these are applicable to your territory. For ease of reference we have, in some cases, referred to "we" or "Sunseeker" and these terms should be taken to mean Sunseeker International Limited.



www.sunseeker.com

Awards

Sunseeker's success over the years is clearly underlined by the following list of national and international awards and achievements.

2009	Sydney Boat Show 2009	Display of Excellence	2002	Entrepreneur of the Year Award	Robert Braithwaite MBE
2009	Croatia Boat Show 2009	Predator 92 Sport – best in class	2001	Best Power Design Award	105 Yacht, The Superyacht Society
2009	Croatia Boat Show 2009	30 Metre Yacht – best in class	2001	Best Power Interior Award	105 Yacht, The Superyacht Society
2009	Croatia Boat Show 2009	Best boat show stand	2001	President's Award	Southern California Marine Association
2008	UK Motor Boat of the Year Awards 2008	Manhattan 60	2000	Queen's Award for Enterprise	Continuous innovation and development
2007	European Powerboat of the Year	Superhawk 43	2000	The Times Exporter of the Year	Times Export Awards
2007	Asia Pacific Boating Awards	90 Yacht, Best of the Best	2000	Robb Report Award	Best of the Best, Boating and Sailing
2007	Modern Boating Magazine 2007	Portofino 47, Imported Powerboat of the Year	1999	Robb Report Award	Best of the Best, Boating and Sailing
2007	Australian Marine Industries Federation Awards	Predator 62, Imported Powerboat of the Year	1999	Motorboat of the Year	Predator 75, BT British Nautical Awards
2007	Nominated by The Superyacht Society	37 Metre Yacht 'The Snapper'	1998	Superyacht Design Award	Manhattan 74, Superyacht Design Awards
2007	Queen's Award for Enterprise	International Trade	1998	Editor in Chief Awards	Yachts Magazine
2006	Nominated for three Superyacht Awards	Predator 108 'SHIVER'	1997	Lifetime Achievement Award	Robert Braithwaite MBE, RYA Awards
2005	Australian Marine Industries Federation Awards	75 Yacht, Non-Trailable Boat Award	1996	Motorcruiser of the Year Award	RYA British Nautical Awards
2005	Australian Marine Industries Federation Awards	Portofino 46, Commendation	1996	Exporter of the Year Award	DCCI Export Awards
2005	Modern Boating, Power Boat of the Year Awards	Predator 68, Imported Powerboat of the Year	1995	Boat Builder of the Year Award	RYA/BMIF British Nautical Awards
2005	Boats.com Marine Industry Web Awards	Manufacturers Category for www.sunseeker.com	1994	Queen's Award for Export Achievement	Queen's Awards for Industry
2004	Sydney Boat Show 2004	Best Overall Display	1992	Best in the World Award	Renegade 60, Boating Magazine
2004	Sydney Boat Show 2004	Best Marina Display	1990	Exporter of the Year	SW International Business Awards
2003	Australian Marine Awards	Manhattan 56, Award for Excellence	1989	Queen's Award for Export Achievement	Queen's Awards for Industry
2003	Australian Marine Awards	Predator 68, Best Imported Non-Trailable Yacht	1987	Queen's Award for Export Achievement	Queen's Awards for Industry

Naval architects
Don Shead/Sunseeker Design

Exterior styling
Sunseeker Design

Interior design
Sunseeker Design/Design Unlimited

Builder
Sunseeker International

*Every attempt has been made to give accurate information, but performance and range figures are estimates given as a guide only. Dirt or growth on the hull, tuning of the engines, size, make of engines fitted, damage to propellers, the temperature of the air and water, the weight of fuel, water, stores, number of people, propeller pitch, quality of fuel and other matters, can all affect a boat's performance and range. For these and other reasons we can give no performance, range or other guarantees, and neither such guarantees nor anything contained herein constitutes an offer of contract or any representation or agreement, or may otherwise be relied upon. The photographs and artist's impressions in this brochure are of existing models in the Sunseeker range. There may be items shown in these photographs and artist's impressions that are not included in the standard inventory of the models shown. Specifications contained on the website are samples only and should not be relied upon and may refer to models only intended for sale in a particular territory and not generally. No guarantee is given that any model will be available in any territory; however by contacting us we can advise you of models that are likely to be available in each territory. Actual specifications will be provided when a sales order or enquiry is placed with us or our approved Sunseeker dealer. Specifications for models sold in different markets may vary and specifications and models may be changed or withdrawn at any time without prior notice. The individual specification for each vessel will be agreed as part of the sale contract between the purchaser and the Sunseeker dealer. Dealers and distributors are independently owned and operated entities, and therefore Sunseeker dealers and distributors are not owned by Sunseeker International Limited or any subsidiaries or other related entity of this company nor are they their agents. Therefore they have absolutely no authority to commit Sunseeker International Limited, or any subsidiary or other related entities of Sunseeker International Limited to any pledge, contract or agreement in any form or by any means unless first accepted in writing by Sunseeker International Limited. In some examples herein Sunseeker have referred to measurements, specifications or other details applicable to a particular territory and no guarantee is given that these are applicable to your territory. For ease of reference we have, in some cases, referred to "we" or "Sunseeker" and these terms should be taken to mean Sunseeker International Limited.

Designed, written and produced by Marketing Matters Limited. Printed in Italy, November 2009. ©Sunseeker International.