

64' Convertible Specifications

		— YACHT COMPANY — NEW GRETN, NEW JERSEY			
TITLE VIKING 64' CONVERTIBLE					
SCALE	N/A	CAD	ENG	CKD	APR
DATE	DWG No.				REV
2/1/10 - 7/31/10					



64' Convertible

Length, overall (L.O.A.)

63' 9" (19.43 meters)

Length, overall (including bow pulpit)

67' 6" (20.57 meters)

Length, waterline (L.W.L.)

55' 3" (16.84 meters)

Beam, overall (B.O.A.)

19' 2" (5.84 meters)

Deadrise (at transom)

15°

Draft

5' 2" (1.57 meters)

Freeboard, forward (X)

7' 4" (2.24 meters)

Freeboard, aft (X)

3' 0" (0.91 meters)

Height, waterline to top of:

flying bridge hardtop (X)

18' 0" (5.48 meters)

flying bridge hardtop masthead light (X)

21' 0" (6.40 meters)

flying bridge console (X)

15' 0" (4.57 meters)

Displacement (standard fuel load) (D) (X)

105,000 pounds (47,627 kilograms)

Fuel capacity standard (B)

1,930 gallons (7,305 liters)

Fuel capacity optional (B)

2,180 gallons (8,252 liters)

Water capacity (B)

325 gallons (1,230 liters)

Holding tank capacity (B)

200 gallons (757 liters)

Cockpit area

180 square feet (16.72 square meters)

CONSTRUCTION

- Ablative/Copolymer antifouling bottom paint, 2 coats, primed
 - Awlgrip brass thru hulls in engine room and forward bilge
 - Awlgrip engine room, lazarette, forward bilge and anchor locker for enhanced visibility and easier maintenance
 - Blister resistant modified epoxy resin in entire hull skin
 - Custom blended polyester resin used in structural laminates, top-sides, bridges, and hardtops
 - Dockside and overboard pump outs for holding tank
 - Dupont Cronar high-gloss polyurethane boot stripe
 - Fiberglass side thru-hulls
 - Hatches, three (3) Bomar, fore-deck hatches, with Ocean Air screen system
 - High-gloss teak interior finish throughout
 - High performance isophthalic gelcoat npg superior gloss, flexibility and outstanding weathering characteristics
 - Hull bottom – vacuum bagged end-grain balsa core sandwiched with fiberglass laminates
 - Hull interior, isophthalic gelcoat top-coated with a durable high gloss polyurethane coating
 - Infused fiberglass fuel and holding tanks, with fiberglass baffles inside and balsa coring on sides for stiffness, sealed to hull with resin foam
 - Laminated end-grain balsa core in hull sides and top-sides
 - Molded fiberglass salon floor/engine room ceiling with Divinycell core for acoustical and thermal insulation
 - Propeller pockets to reduce draft
 - Solid reinforced keel
 - Stringers, fiberglass encapsulated foam
 - Transducer location molded into keel
 - Vacuum bagged composite bulkheads – Main engine room bulkhead, intermediate engine room bulkheads, and forward bulkhead
- ## MECHANICAL
- Air conditioning –direct expansion zoned with reverse cycle heat for complete climate control throughout the interior and with individual temperature controls for staterooms and salon
 - Bilge pumps with additional clean out pumps in keel area linked into monitoring system and connected to float switches for automatic and manual operation
 - "Delta T" electrically controlled engine room ventilation dampers, integrated into fire suppression system
 - "Delta T" engine room ventilation system with supply and discharge fans for proper fresh air supply and water intrusion suppression
 - Dual stage variable speed 110V AC freshwater system with on deck fresh water fill and cockpit dock supply inlet with pressure reducing valve
 - Engine room entrance gauge package consisting of gauges for digital tachometer, engine water temperature, and engine oil pressure, and remote mounted engine start and stop switches for easier viewing and accessibility
 - External sea strainers for main engine pick-ups

FLYING BRIDGE OPEN (continued)

- Lighted compass, large and flush-mounted on centerline
- Lounge seating forward and starboard with vinyl covered foam cushions, hinged for access to rod storage under seat
- Moritz Octoplex touch screen control panel with audible and visible alarms: fire, engine room temperature, and generator as well as confirming correct system operation
- Murray Products helm and companion seats, all teak, ladder back with 4" pedestals and removable cushions and covers, adjustable
- Nonskid deck for traction and durability
- Power assist hydraulic steering with steering junction block under helm for future stations/autopilot
- Recessed electronics boxes in console for custom electronics package that is easily viewable and protected from the elements by acrylic fitted lids with gaskets and stainless steel gas pistons
- Recessed radio boxes, large radio box on port and starboard side of console with switch panel inside
- Refrigerated top loading chill box and storage freezer at forward end of console for keeping drinks and snacks accessible from the bridge
- Removable flybridge jumpseat backrest
- Stereo speakers, tied into stereo system in salon, flush-mounted to aft ends of bridge with remote control
- Starboard jump seat, aft facing seat with storage underneath
- Trim tab control switch mounted at console
- Trumpet style air horns, (2)
- Under helm access with lights and storage room
- VHF radio with antenna and mounts – ICOM IC-M604
- Windshield, centerline venturi cutout to maximize visibility

FLYING BRIDGE ENCLOSED (OPTIONAL)

- Air conditioning with reverse cycle heat, temperature control and dehumidification mode
- Cabinetry and furniture manufactured of teak hardwoods and veneers with furniture finish
- Carpeting
- Central vacuum unit connection
- Cocktail table – teak, fixed pedestal mounted
- Companion seats, port and starboard jump seats with footrests and drawers underneath port seat
- Fixed side and aft windows
- Forward control station with all necessary switches, lighted instruments, engine controls and power assist steering
- Fuel gauge located in cabinet at console
- Gauges/electronic displays supplied by engine manufacturer
- Hatch in overhang with powder-coated ladder and access to hardtop
- Large under helm area for easy access and added storage
- L-shaped lounge on raised floor for better visibility and with storage underneath
- Molded fiberglass seat on aft deck with removable cushions and storage underneath
- Moritz Octoplex touch screen control panel with audible and visible alarms: fire, engine room temperature, and generator as well as confirming correct system operation

GALLEY/DINETTE

- Companionway entrance located between galley and dinette
- Custom Amtico flooring
- Dinette couch with removable cushions and storage room underneath
- Dinette table, teak with high-gloss finish with single pedestal, thru-bolted
- Electric range, 4-burner cooktop, surface-mounted
- Exhaust fan, high velocity
- Galley countertop, custom granite
- Garbage disposal in sink
- Lights, overhead Xenon lights with dimmer and fluorescent lighting
- Majilite headliner, natural color, 1/8" foam & tricort backing
- Microwave/convection oven located in upper galley cabinet above sink –stainless finish
- Refrigerator and freezer, SubZero, large capacity, deep-drawer under-counter style with varnished teak faces, (2) refrigerator units and (1) freezer unit with ice maker
- Sink, stainless steel with under-mount chrome faucet
- Storage cabinets in upper galley, varnished teak doors with teak faced deep, pull-out drawers with aircraft style slides for smooth movement and latches to keep drawers in place while underway
- Storage cabinets and drawers in lower galley, varnished teak doors and faces with stowage for utensils and other items
- Trash compactor in lower galley with teak face
- Water tank level gauge and pump indicator located in galley sub-panel

COMPANIONWAY

- Awlgrip bilge areas with access hatches, snow white and lighted for easier maintenance and cleaning
- Carpeting, carpeted steps from galley to companionway
- Central vacuum unit connection with accessories
- Laundry center with front loading washer and dryer behind teak door
- Lighting, overhead Xenon lights recessed in headliner
- Majilite headliner, natural color, 1/8" foam & tricort backing
- Wall panels, natural color/Majilite headliner individually installed with Velcro backing for easy maintenance

MASTER STATEROOM (MIDSHIP)

- Air conditioning with reverse cycle heat with temperature control
- Bedspread – quilted, designer style
- Carpeting
- Closets, twin maple-lined hanging closets with teak doors built into aft wall
- Drawer storage under bed, (2) large drawers
- End tables at forward and aft ends of bed with drawer and door storage
- Entry credenza with drawer storage
- Headboard, upholstered



64' Convertible

NOTES:

This specification sheet is subject to change.

- A** The right is reserved to make changes, without notice, at any time, in equipment, materials, prices and specifications. Line drawings and photos may show some optional equipment.
- B** Capacities of tanks are estimates and usable volume will vary depending upon conditions.
- C** These prices apply only if order is placed prior to boat going into production. Prices are for standard installation only. Custom work is extra cost.
- D** Weight shown is calculated with standard fuel and water tanks full.
- E** Prices available through Dealer.
- H** Includes credit for standard.
- J** Must be ordered 90 days prior to start date.
- K** Requires F/B hardtop.
- N** Includes life jackets (6 adult), life ring (21"), flare kit, fenders: 10" (2), engine oil, deck mop, deck brush, bucket, hose, nozzle, fuel filters: engines and generator, raw water pump impeller for main engine (1), boat soap (1 qt.) and bilge cleaner (1 qt.)
- R** Generator is not intended to supply power for all standard and optional accessories. Load must be limited to generator output rating.
- S** In order to offer the full range of decor, selections are required with initial order.
- V** Includes 24V lighting and cockpit flood lighting.
- X** Measured with largest engines available, standard fuel, and water.
- Z** Available in 3 stateroom layout only.

OPTIONAL EQUIPMENT (A) (C) (S)

STANDARD POWER: MAN V12 1550CRM:1550MHP

SATIN INTERIOR FINISH THROUGHOUT N/C

*Standard finish will be high-gloss, teak (J)

FOUR STATEROOM LAYOUT 14,500

COCKPIT

Livewell in cockpit sole	1,850
Outriggers, Rupp w/spreaders	8,830
Swim platform & ladder	6,965
Transom custom lettering	POR
Transom std lettering	1,075
Transom fish box molded-in	3,800

DECK/EXTERIOR

Bow pulpit removal	3,335
Bow thruster DC	20,255
Custom hull color	12,800
Davit, (1,600 lbs.) w/hydraulic lift	30,670
Davit, (1,600 lbs.) w/hydraulic lift & rotation	36,785
Fender racks 12"	1,045
Salon forward window mask	13,450
Windlass, Lewmar V4 SS w/50' chain, 250' rope	8,210

DECOR (S)

Custom decor (H)	POR
Decor mini accessory kit	9,010
Decor maxi accessory kit	15,050
Granite surfaces in heads	POR
Luxury edition open	
3 stateroom (H)	11,110
4 stateroom (H)	13,330
Luxury edition enclosed	
3 stateroom (H)	16,315
4 stateroom (H)	18,515
Premier edition open	
3 stateroom (H)	21,250
4 stateroom (H)	23,450
Premier edition enclosed	
3 stateroom (H)	26,465
4 stateroom (H)	28,665
Mirror ceiling in heads, each	2,935
Sofa, upgraded style (K)	POR
Wallcovering, custom (J)	POR

ENCLOSED FLYING BRIDGE 85,450

Radar mast - single (K)	10,440
Radar mast - dual (K)	13,670
Spiral staircase	19,900

OPEN FLYING BRIDGE

4 Sided enclosure (K)	13,965
(6) Rod rocket launcher (K)	1,100
Air conditioning	15,850
Center rigger (K)	1,070
Costa Clear upgrade for enclosure (K)	POR
Hard top w/ molded in quartz lights (V)	35,000
Lights, remote spotlight	1,935

SALON

Carpet runner full	2,045
Carpet runner partial	915
Carpet runner - companionway and steps	1,200
Electronic safe under bed	2,600

GALLEY

Dishwasher	1,145
------------------	-------

GUEST STATEROOM - FWD

Crossover stateroom arrangement w/upper credenza (Z)	6,425
Stereo/CD player, (12V)	860
Telephone (additional outlet) each	365

GUEST STATEROOM - STBD

Crossover bunk configuration	1,260
Stereo/CD player (12V)	860
Telephone (additional outlet) each	365
Television (additional outlet) each	485
TV, 19" color LCD flat screen	1,600

DELIVERY

Fuel & freight (E)	POR
Propellers, 5 blade (spare with storage boxes and Prop Smith removal/installation tool)	35,415

ENGINE ROOM

Eskimo ice machine	14,250 NET
Fuel tank additional 250 gallons	6,145
Generator, additional 21.5 kw w/gas/water separator ...	25,930
Underwater exhaust	4,875
Water maker, 1,400 GPD w/auto backflush and flybridge control panel	18,920

OPTIONAL POWER:

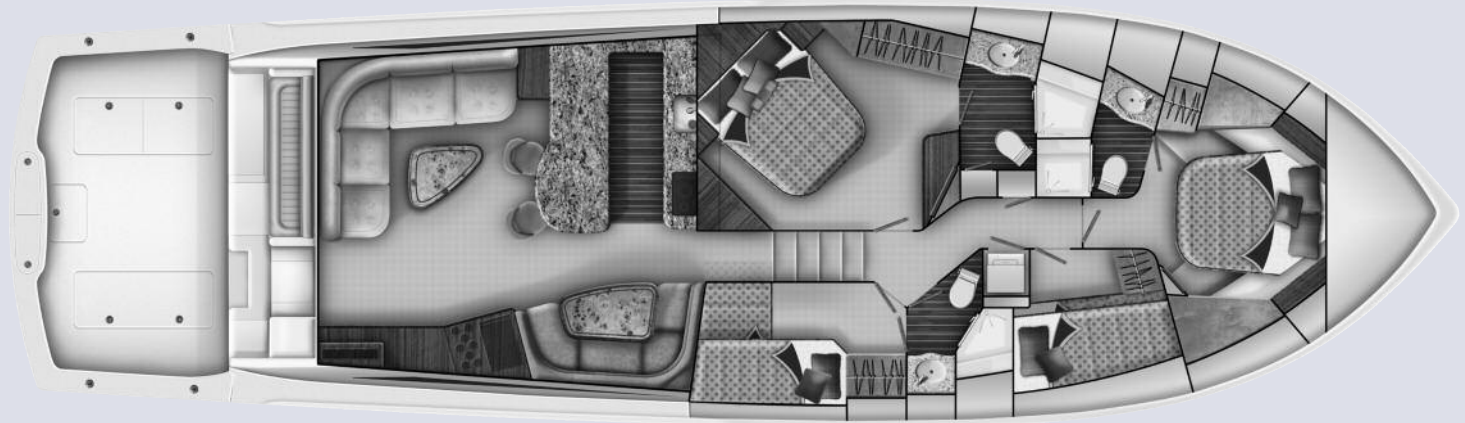
MTU Series 2000-V12 M94: 1920BHP	POR
MTU Series 2000-V16 M91: 2000BHP	POR
CAT C-32A: 1825MHP	POR
CAT C-32A: 1925MHP	POR
MAN V12 1800CRM: 1800MHP	POR



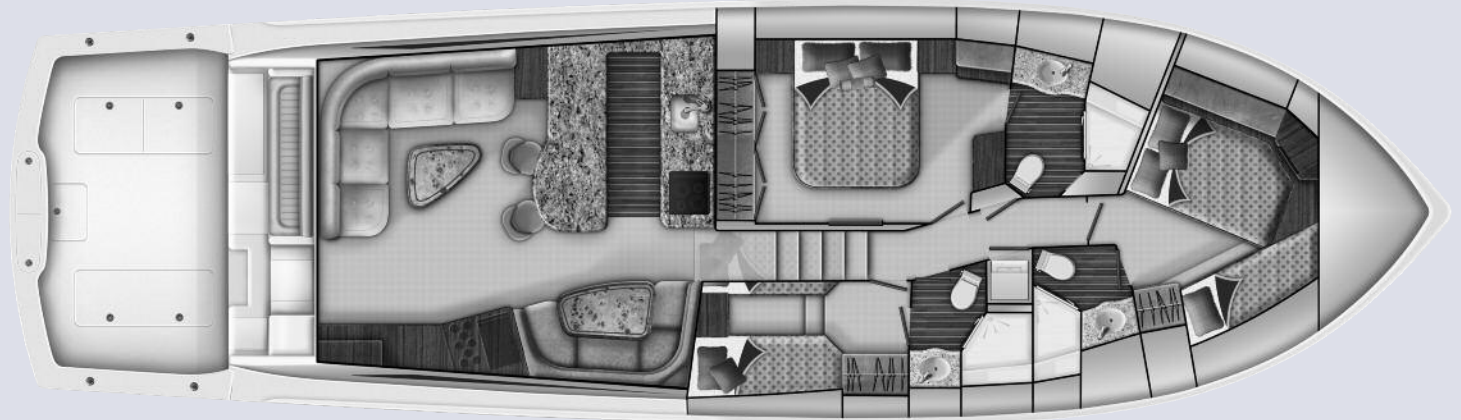
64' Convertible

VIKING YACHTS ONE YEAR LIMITED WARRANTY

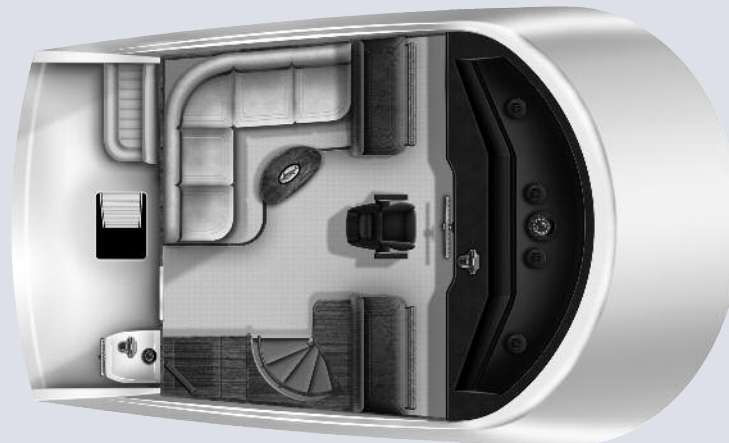
Viking provides a 12 month limited warranty to the original purchaser. Certain restrictions apply. Ask your dealer for a copy.



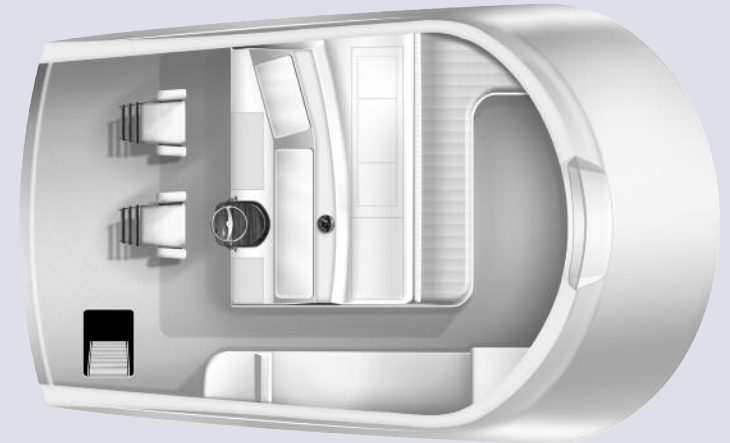
4 Stateroom with Optional Crossover Starboard Aft Stateroom



3 Stateroom



Enclosed Bridge



Open Bridge

Route 9 "On the Bass River"
P.O. Box 308
New Gretna, NJ 08224

(609) 296-6000
(609) 296-3956 Fax

www.VikingYachts.com